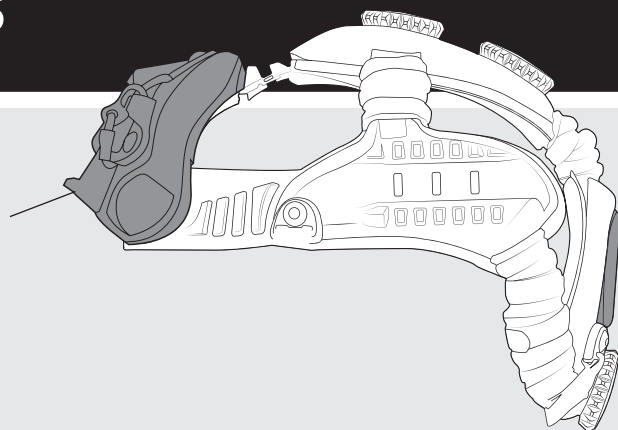


# ACCESSORIES

## ATTACHMENT

The Modular Bungee Shroud and Rear Exterior VELCRO® provide convenient and secure ways to attach and detach various accessories to different positions, allowing for personalized customization.

Modular Bungee Shroud

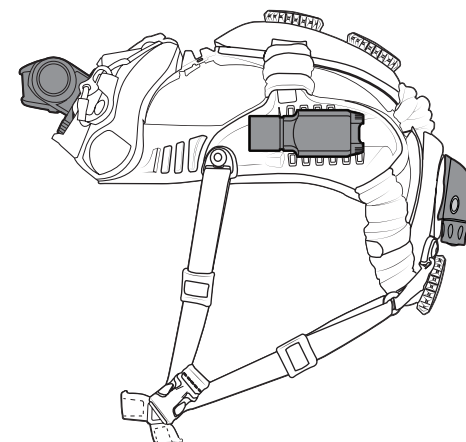
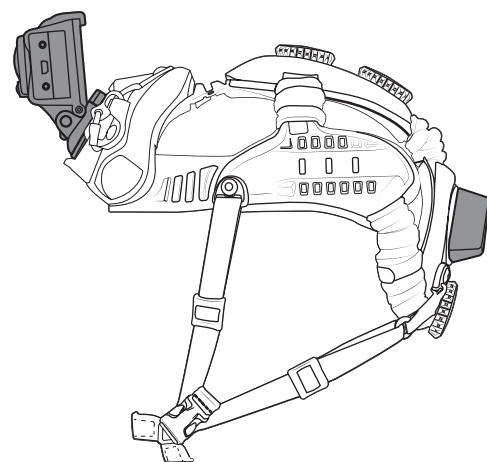


Rear Exterior VELCRO® & Mounting Plate for Counterweights



# SKULL MOUNTING SYSTEM MBS

OPERATOR'S MANUAL



## VIDEO CAMERAS

The Skull Mounting System MBS provides mounting options for various types of video cameras. A Counterweight can be attached to the rear of the Skull Mounting System MBS to counterbalance the weight of accessories attached to the Front Plate.

## ILLUMINATION / IFF

Skull Mounting System MBS allows for streamlined mounting of devices such as IR illuminators, lights, and IFF devices. The Rear Exterior VELCRO® provides a quick way to attach and detach accessories.



## GENTEX CORPORATION LIMITED WARRANTY

Unless an individual product is covered by a separately issued warranty, Gentex warrants that all ballistic helmet shells will be free from defects in material or workmanship under normal use and service for a period of five (5) years from the date of delivery. Unless an individual product is covered by a separately issued warranty, Gentex warrants that all helmet components, accessories, peripherals, and parts will be free from defects in material or workmanship under normal use and service for a period one (1) year from the date of delivery. All repair covered by this warranty shall be performed at Gentex's factory, or other such warranty repair facilities of Gentex as designated by Gentex unless Gentex specifically directs that repair services be performed at another location. Any defect corrected and found to be within this scope of the warranty will be repaired by Gentex and all charges for labor and material will be borne by Gentex. If it is determined that either no fault exists in Gentex, or the damage to be repaired was caused by negligence of the user, its agents, employees or customers, you agree to pay all charges associated with each such repair. No statement, recommendation or assistance made or offered by Gentex through its representatives to the user, its agents, employees, or customers in connection with the purpose or intended use of any Gentex product shall be or constitute a waiver by Gentex of any of the provisions of this warranty or change Gentex's liability under this warranty.

EXCEPT WHERE PROHIBITED BY LAW, THE WARRANTY DESCRIBED ABOVE CONSTITUTES THE SOLE WARRANTY MADE BY GENTEX EITHER EXPRESSED OR IMPLIED. THERE ARE NO OTHER WARRANTIES EXPRESSED OR IMPLIED THAT EXTEND BEYOND THE FACE HEREOF, HEREIN, INCLUDING THE IMPLIED WARRANTIES OF MERCHANTABILITY AND FITNESS FOR A PARTICULAR PURPOSE. IN NO EVENT SHALL GENTEX BE LIABLE FOR ANY INCIDENTAL, CONSEQUENTIAL, OR SPECIAL DAMAGES EVEN IF ADVISED OF SUCH DAMAGES, AND THE USER, ITS AGENTS, EMPLOYEES, OR CUSTOMERS REMEDIES SHALL BE LIMITED TO SOLELY TO THE REPAIR OR REPLACEMENT OF NONCONFORMING UNITS OR PARTS, WHICH AMOUNT SHALL NOT EXCEED THE TOTAL PURCHASE PRICE OF THE PRODUCT UNDER WARRANTY.

Any tampering, misuse or negligence in handling or use of the product renders the warranty void. Further, the warranty is void if, at any time, the user, its agents, employees or customers attempts to make any internal changes to any of the components of a product; if at any time the power supplied to any part of the product exceeds the rated tolerance; if any external device attached by the user, its agents, employees or customers creates conditions exceeding the tolerance of the product; or if any time the serial number plate is removed or defaced. OPERATION OF THE PRODUCTS THAT RENDERS THIS WARRANTY VOID WILL BE DEFINED TO INCLUDE ALL OF THE POSSIBILITIES DESCRIBED IN THIS SECTION, TOGETHER WITH ANY PRACTICE THAT RESULTS IN CONDITIONS EXCEEDING THE DESIGN TOLERANCE OF THE PRODUCTS.

## WARNING

The Skull Mounting System MBS does not provide any type of protection for the head and does not offer any protection against neck, spinal, or brain injuries including those caused by rotational forces. Inspect the Skull Mounting System MBS before each use. Make sure the adjustment dials, plastic hardware, stitching, chinstrap, and fit system components are not damaged, cracked, deformed, loose or showing signs of excessive wear. If they do, replace them or the Skull Mounting System MBS.

[www.ops-core.com](http://www.ops-core.com)

## KIT INCLUDES:

(1) Skull Mounting System MBS equipped with (1) ½" Front Pad, (1) ¼" Top Pad, (1) ¼" Rear Pad, (1) ¼" Left Side Pad, (1) ¼" Right Side Pad; and additional (1) ½" Rear, (1) ½" Left Side, and (1) ½" Right Side Pads

This product is covered by one or more patents. For more information visit [www.gentexcorp.com/patents](http://www.gentexcorp.com/patents)

UM-1063 REV.A

© 2019 Gentex Corporation. Ops-Core is a registered trademark of Gentex Corporation or its affiliates. VELCRO® is a registered trademark of Velcro BVBA.

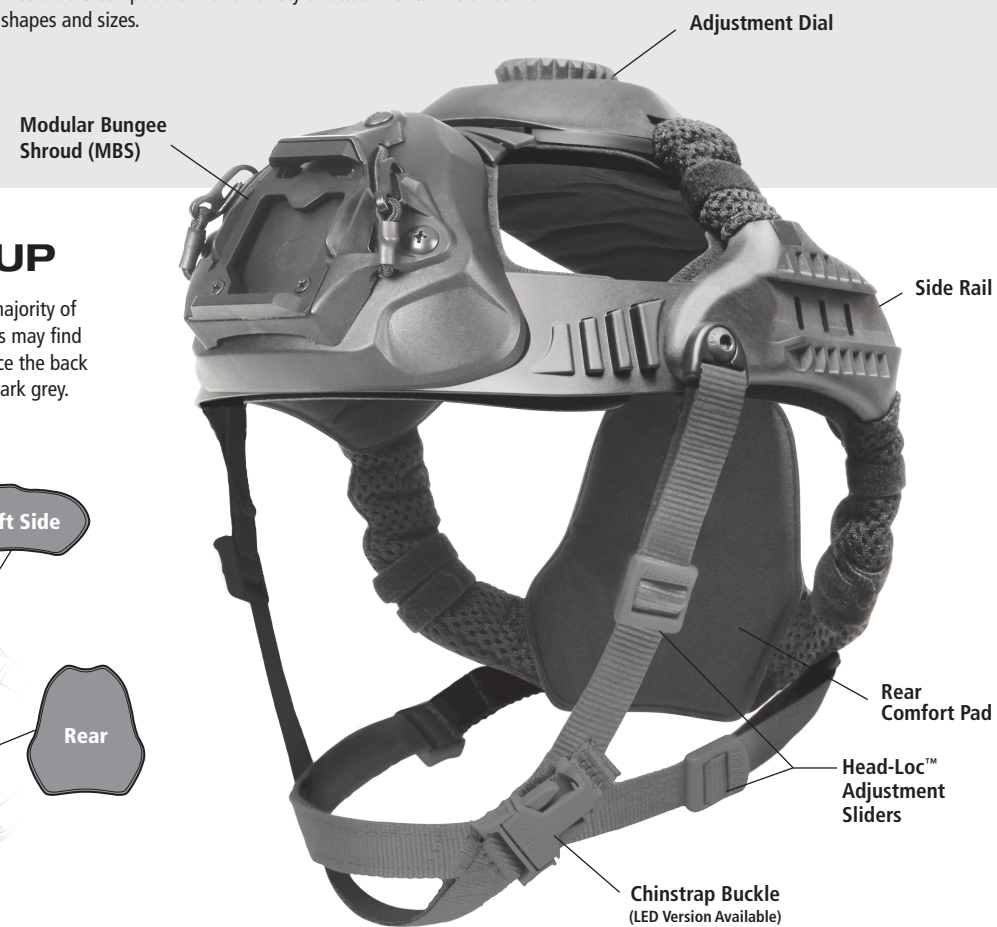
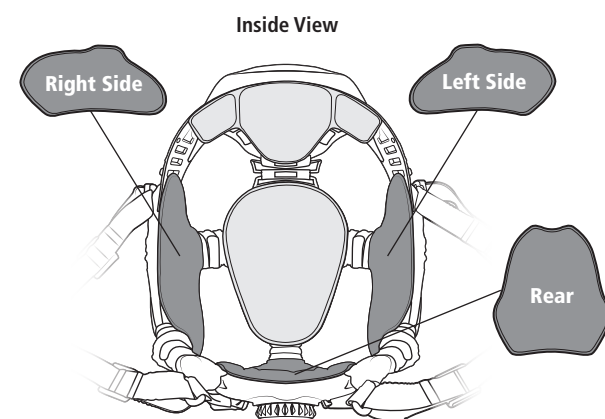
# INTRODUCTION

## ABOUT YOUR SKULL MOUNTING SYSTEM MBS

This manual covers the basic operating and fitting instructions for the Ops-Core Skull Mounting System MBS. The Skull Mounting System MBS is a multi-purpose headgear integration device that is compatible with a variety of attachments. The three dial adjustment system accommodates a full range of head shapes and sizes.

## COMFORT PAD SETUP

The Skull Mounting System MBS is designed to fit the majority of head sizes. However, some users with smaller head sizes may find the thin pads to result in a loose fit. If this occurs, replace the back and side pads with the thicker comfort pads shown in dark grey.



## COUNTERWEIGHT KIT (OPTIONAL)

Kit includes (1) Small and (1) Large Counterweight with corresponding hardware.

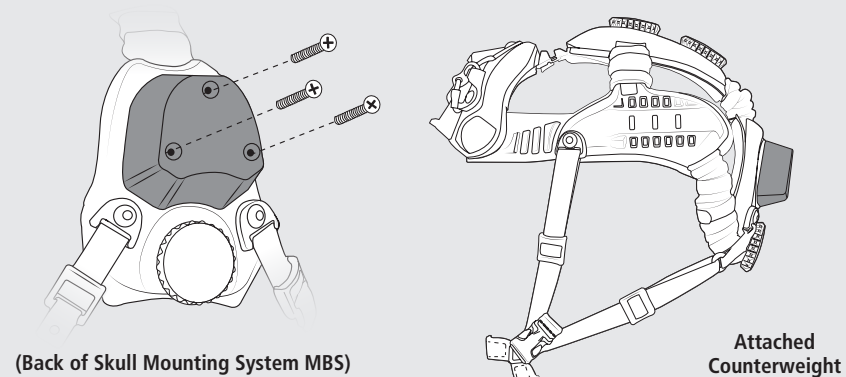


## COUNTERWEIGHT ATTACHMENT

**NOTE: ONLY ATTACH A COUNTERWEIGHT IF YOU NEED TO COUNTERBALANCE AN ATTACHMENT AT THE FRONT OF THE Skull Mounting System MBS.**

Align Counterweight holes to the holes on the back of the Skull Mounting System MBS. Hold Counterweight in place and use your fingers to loosely attach a screw through the Counterweight and Skull Mounting System MBS. Repeat for the remaining 2 holes.

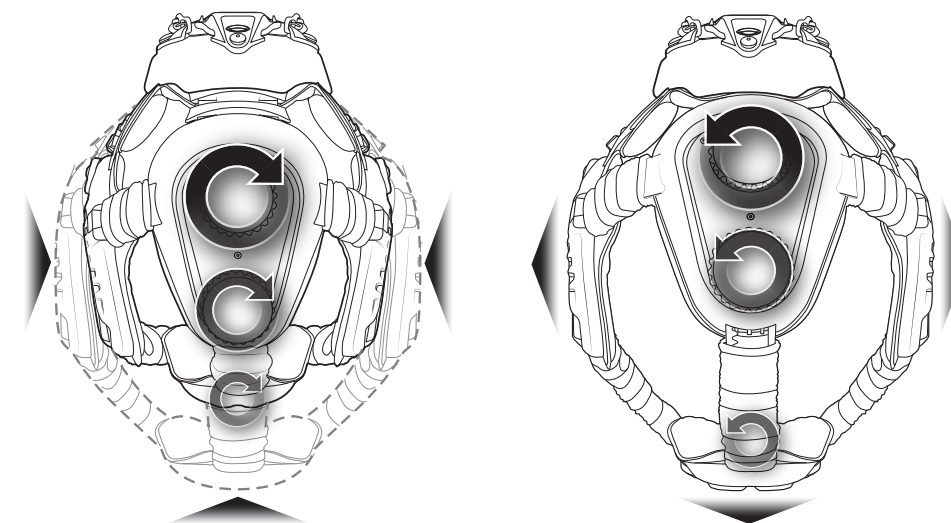
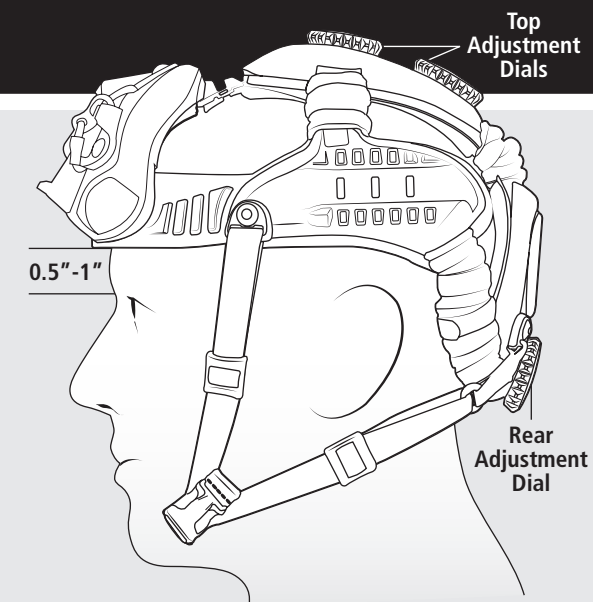
Finish by using a screwdriver to tighten all 3 screws from the outside of the Counterweight, making sure the Counterweight is securely fastened to the Skull Mounting System MBS.



# FIT & ADJUSTMENT

## 1 SKULL MOUNTING SYSTEM MBS SETUP

- Turn Adjustment Dials counterclockwise (left) to make sure the Skull Mounting System MBS is fully open.
- Place open Skull Mounting System MBS on your head so that the Universal Front Plate is centered over the bridge of your nose. Begin adjustment by firmly pressing down on the top of the Universal Front Plate while tightening the Rear Adjustment Dial (turn clockwise to tighten).
- The distance from the top of the eyebrow to the bottom of the Skull Mounting System MBS should be approximately 0.5" - 1" as shown. The bottom of the Rear Pad should rest above nape of the neck.



## TIGHTEN

(Skull Mounting System MBS Fully Closed)  
TURN DIALS CLOCKWISE TO TIGHTEN

## LOOSEN

(Skull Mounting System MBS Fully Open)  
TURN DIALS COUNTERCLOCKWISE TO LOOSEN

## 2 FIT DIAL OPERATION

- Proceed to tighten the front and rear Top Adjustment Dials until the Skull Mounting System MBS fits securely on head. Readjust dials as desired to achieve comfortable fit and positioning.
- Once the front and rear Top Adjustment Dials are set, the Rear Adjustment Dial may need to be tightened again.

## 3 CHINSTRAP OPERATION

- Fasten the Chinstrap Buckle. With both hands, pull the two Rear Head-Loc Sliders on the lower webbing straps toward your chin until snug.
- With both hands, pull the two Front Head-Loc Sliders on the webbing straps that come from the front temples of the Skull Mounting System MBS toward your chin until snug.

