

Donning & Doffing the PureFlo™ ESM/ESM+ Respirator

1




Install a plug assembly onto the battery charger.



Charge the batteries (nominal recharge time is 2.5 hours).

Install fully charged batteries into the respirator.



CONDITION	LED STATUS
Before Charging	YELLOW 
Fast Charging	ORANGE 
Battery Fully Charged	SOLID GREEN 

2

VISUAL INSPECTION

Check the neck cape or face seal material for any damage.



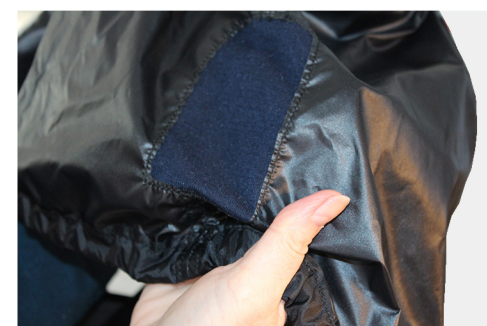
Ensure neck cape is attached to the respirator chassis & check visor seal for damage.



Check the operation of the neck toggle faster.



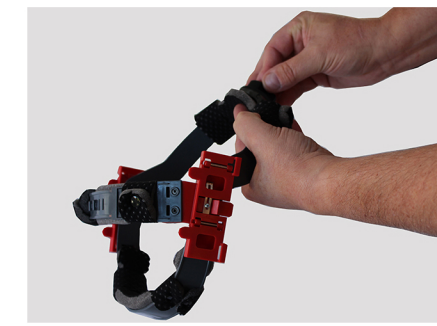
Check the exhale patch for contamination.



3

DONNING THE RESPIRATOR

Ensure the adjustable headband is adjusted for head circumference & height.

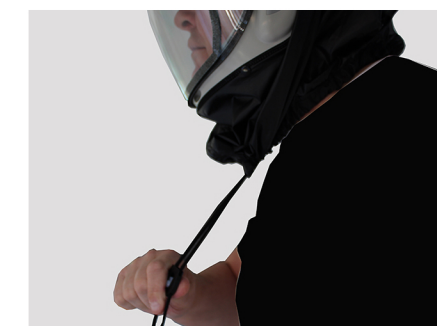


Replace the headband into the front or rear position, clicking into place.



Switch the respirator on. The Red and Green LED lights will illuminate. When the Red light goes off, the respirator is ready to don.

Place respirator over head and form the seal by pulling the neck toggle drawstring into position.



Tuck the drawstring cord inside your workwear.

During use, if the green light flashes intermittently with an audible alarm, this indicates that the battery is low. If a solid red light shows with an audible alarm, then the filter needs to be changed. Ensure you make your way out of the contaminated area.

4

DOFFING THE RESPIRATOR

Ensure you are away from contaminated area.

Release neck fastening toggle, & carefully lift respirator off head & switch off.

Completely close the neck drawstring and insert into the respirator to keep the inside of the respirator clean and free of dust when not in use.



A polythene bag is provided for clean storage.

CHANGING THE FILTER

1. Hold the respirator with the filter facing down.
2. Twist the filter in an anti-clockwise direction whilst holding the respirator and dispose of the filter.
3. Replace with new filter, screwing clockwise until hand tight.