

HA/LP Max Comfort Kit

Increased Mission Effectiveness through Reduced Fatigue by Better Comfort & Fit

The Gentex Mask Breathing Unit (MBU) Max Comfort Kit is a proven, field-upgradable solution that reduces pain associated with oxygen mask usage and seals against the face with less pressure. Don't fly distracted by an uncomfortable mask! The Max Comfort kit is retrofittable into most HA/LP aircrew oxygen masks.



KEY FEATURES

Softer 45 Durometer Facepiece

- Better facial conformance
- Reduced hot spots
- Material qualified during COMBAT EDGE DT&E

Pre-Cut Hardshell (Option)

- Factory precision trimmed to Tech Order allowed dimensions
- Improves comfort specifically in nose and cheek area
- Geometry qualified during COMBAT EDGE OT&E

Sized Color-Coded Compensation Tubes

- Prevents tube kinking leading to increased exhalation resistance
- Color-coded tubes for easy identification the correct tube is installed

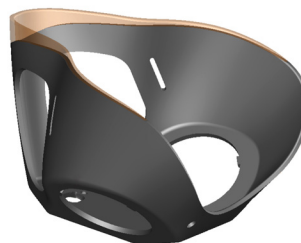


Expanded Mask Size Range

The Max Comfort Kit adds a sixth mask size.

The Wide-Medium Narrow (W-MN) hardshell assembly is mated with a Medium Narrow facepiece to provide additional space in the mask around the nose and cheek area.

This new design has been proven to solve mask discomfort issues in aircrew with broader noses and more pronounced cheekbones.



The pre-cut hardshell has the maximum permitted material removed from the nose bridge.

HA/LP Max Comfort Kit

SELECTION TABLE

Mask Configuration		Size	Max Comfort Kit Part Number
HA/LP Masks	With Hardshell	Small Narrow (SN)	G010-2300-01
		Medium Narrow (MN)	G010-2300-02
		Medium Wide (MW)	G010-2300-03
		Large Wide (LW)	G010-2300-04
		Extra Small Narrow (XSN)	G010-2300-05
		Medium Wide Narrow (MWN)	G010-2300-06
	No Hardshell	Small Narrow (SN)	G010-2300-21
		Medium Narrow (MN)	G010-2300-22
		Medium Wide (MW)	G010-2300-23
		Large Wide (LW)	G010-2300-24
		Extra Small Narrow (XSN)	G010-2300-25
HA/LP Masks with Anti Suffocation Valve (ASV)	With Hardshell	Small Narrow (SN)	G010-2300-11
		Medium Narrow (MN)	G010-2300-12
		Medium Wide (MW)	G010-2300-13
		Large Wide (LW)	G010-2300-14
		Extra Small Narrow (XSN)	G010-2300-15
		Medium Wide Narrow (MWN)	G010-2300-16
	No Hardshell	Small Narrow (SN)	G010-2300-31
		Medium Narrow (MN)	G010-2300-32
		Medium Wide (MW)	G010-2300-33
		Large Wide (LW)	G010-2300-34
		Extra Small Narrow (XSN)	G010-2300-35

Contact Us

Gentex is committed to designing and manufacturing advanced performance capabilities for worldwide aircrew personnel. For more information on the Gentex HA/LP Max Comfort Kit please contact Gentex at sales@gentexcorp.com or one of our authorized distributors through www.gentexcorp.com. Like us at facebook.com/Gentexcorp.