



PureFlo ESM+ PAPR Maintenance Guide

PureFlo ESM+ PF60 Units

Cleaning Instructions

1. For units with gross contamination, ensure visor is down and unit is upright. If fitted, ensure neck cape drawstring is closed. Clean using a clean cloth with a mild solution of a household liquid soap and water. For ingrained dirt on the outside of the unit (excluding visor), a nail brush, ultrasonic brush or scouring pad may be used. Dry unit with a clean lint free cloth – do not use heat source.
2. Wipe the inside & outside of the unit including motor plenum. PUREWIPE (PR02054SP) cleaning wipes are recommended for this purpose.
3. Do not immerse the helmet in water or any fluid.
4. Do not use organic solvents or abrasive cleaning agents on any part of the equipment.
5. Launder the neck cape, concussion strap and comfort pads as required using a mild solution of a household detergent and water (Max – 86°F).



Servicing

1. Before Disassembling

Always clean gross contamination from the unit following the Cleaning Instructions detailed above.

2. Visor Protectors

Install a new visor protector as shown in Fig. 1.

3. Visor Assembly Replacement

Replace the old or damaged visor assembly as shown in Fig. 2. Visors should be stored out of direct sunlight and replaced at least every 5 years or according to local regulations, whichever is soonest.

4. Neck Capes

Referring to Fig. 3 replace the neck cape as follows:

- a) Locate hole over molded hook on front of unit.
- b) Attach 12 press fasteners.
- c) Secure neck cape in groove around rear of unit.

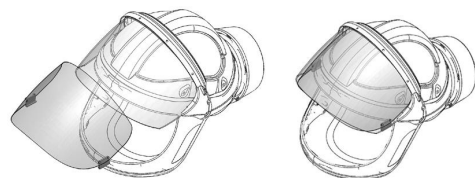


Fig. 1

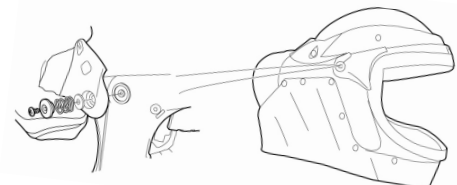


Fig. 2

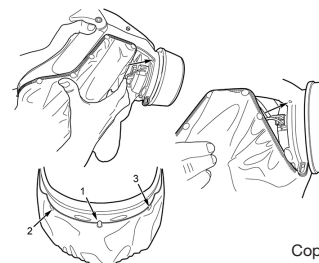
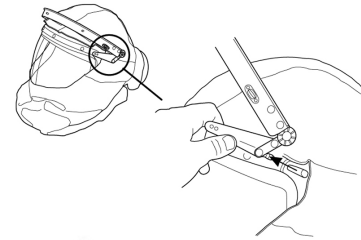


Fig. 3

5. Faceshield Attachment Bar

Fit the faceshield attachment bar as shown below in Fig. 4 ensuring the mounting pins are fully located in the visor side arm socket.

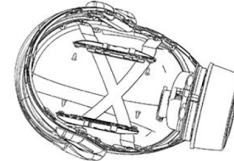
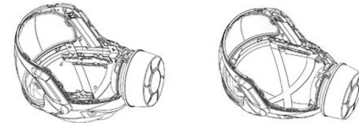

Fig. 4

6. Helmet Shells

Store out of direct sunlight and replace every 5 years or according to local regulations, whichever is soonest.

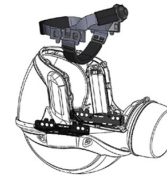
7. Concussion Strap Assembly

Replace the concussion strap assembly by removing the quick release headband referring to Fig. 5 to remove the screws & plastic moldings before replacing concussion strap. Ensure holes in the strap locate correctly over the plastic bosses. Carefully reassemble using reverse of disassembly procedure.


Fig. 5


8. Quick Release Headband Assembly

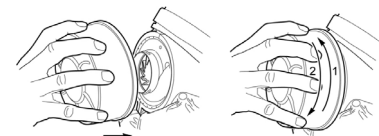
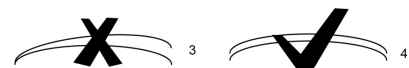
Install a new headband assembly as shown in Fig. 6.


Fig. 6

9. Air Filter Replacement

The air filter must be replaced when the Red LED on the chin display is illuminated - see Fig. 7:

- Twist the filter in direction 1 to engage the thread and then tighten in direction 2 to fit the filter onto the respirator.
- Item 4 shows the correct gap between the air filter and the respirator once the air filter has been installed. If the gap is uneven (Item 3) the air filter must be removed and reinstalled as it has been cross-threaded and will not function properly.

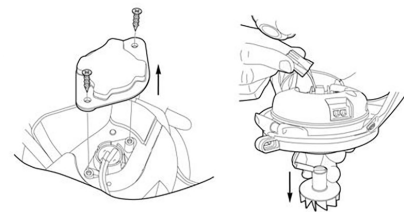
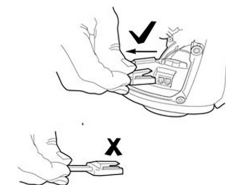

Fig. 7


10. Fan / Motor Assembly Replacement

Replace the fan/motor assembly as shown in Fig. 8.

After installing a new fan/motor assembly, perform the following steps:

- Ensure that the fan blades spin freely
- Install a clean air filter
- Perform the checks described in the Preparation for Use part of the User Instructions supplied. After the airflow control has been performed, the green LED must be illuminated on the chin bar display.


Fig. 8


Gentex Corporation
 324 Main Street
 Simpson, PA 18407
 USA
 Tel: 570.282.3550
 Fax: 570.282.8555